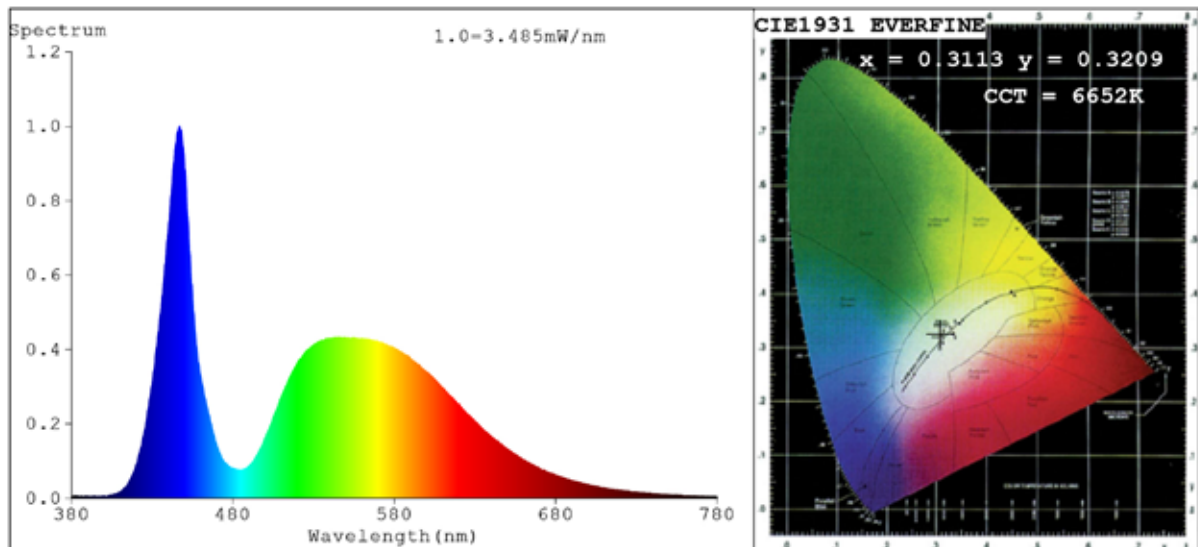


## Spectrum Test Report



### Color Parameters:

Chromaticity Coordinate:  $x=0.3113$   $y=0.3209$   $u'=0.1999$   $v'=0.4637$   
 CCT=6652K (Duv=-0.0003) Dominant WL:  $\lambda_d = 484.1\text{nm}$  Purity=8.5%  
 Ratio: R=12.3% G=84.1% B=3.6%; Peak WL:  $\lambda_p = 447.1\text{nm}$  FWHM=20.6nm  
 Render Index:  $R_a=71.5$  CRI=62.8 TM30:  $R_f=68$   $R_g=94$   
 R1 =72 R2 =73 R3 =73 R4 =74 R5 =73 R6 =65 R7 =78  
 R8 =63 R9 =0 R10=35 R11=74 R12=43 R13=71 R14=84 R15=68

### Photo Parameters:

Flux = 90.07 lm Eff. : 90.07 lm/W  $P_e = 286.1\text{ mW}$  Scotopic: 180.85 S/P: 2.0079

### Electrical parameters:

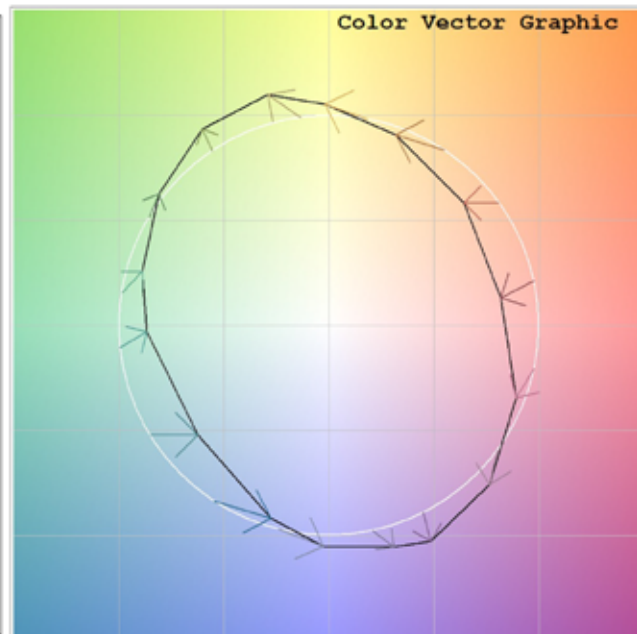
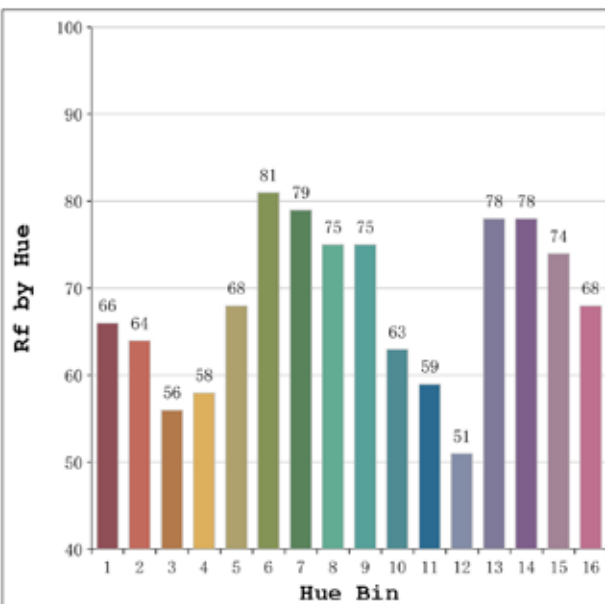
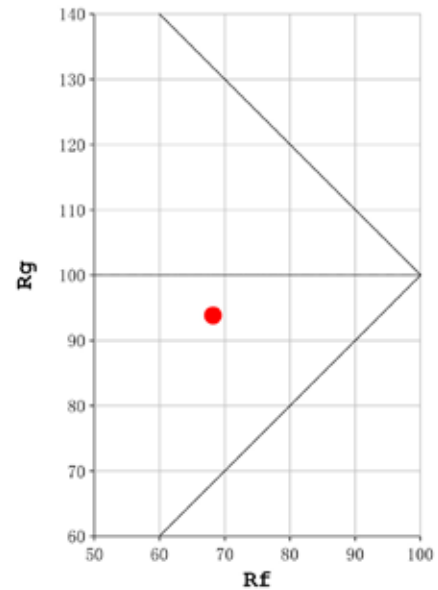
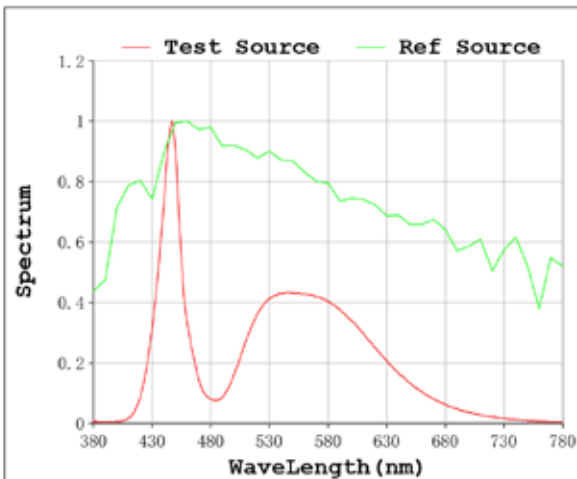
V = 11.998 V I = 1.618 A P = 1 W PF = 1.000

Status: Integral T = 5000 ms  $I_p = 21670$  (33%)

Model: Ecoled Mérida  
 Tester: Sergio Carneros  
 Temperature: 23Deg  
 Manufacturer: Luz Negra S.L

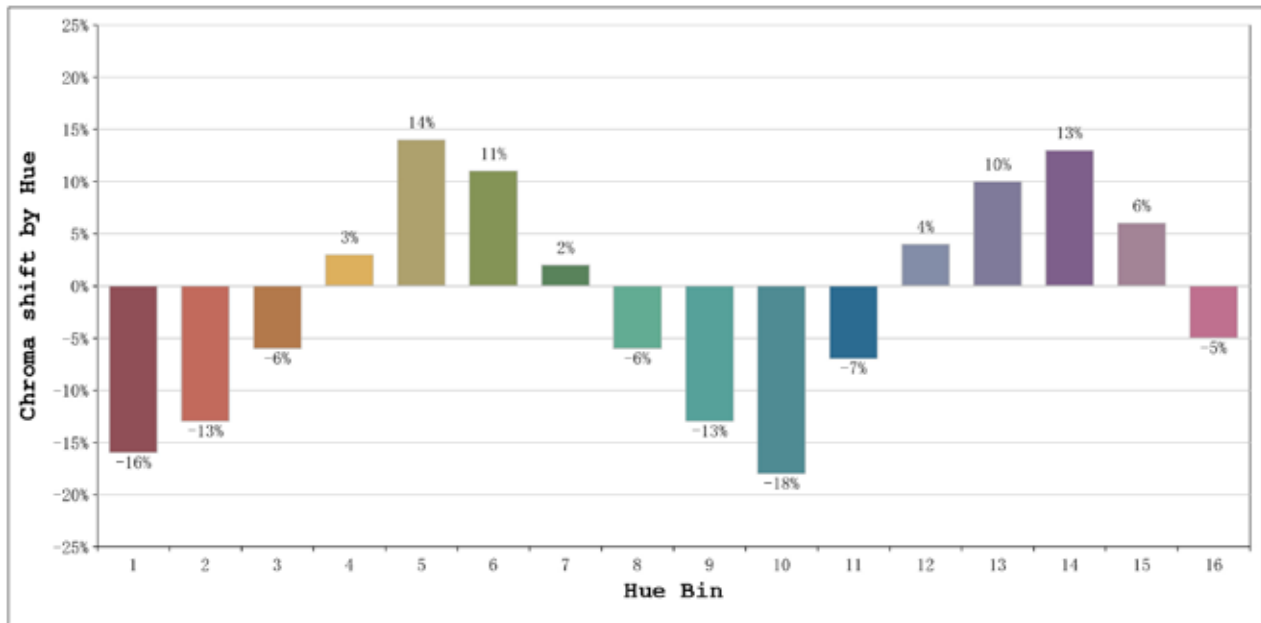
Number: 43.024  
 Date: 2023-10-04 09:14:37  
 Humidity: 53%  
 Remarks: 1 módulo led

**Rf: 68**      **CCT: 6652 K**      **u': 0.1999**  
**Rg: 94**      **Duv: -0.0003**      **v': 0.4637**



Model:Ecoled Mérida  
 Tester:Sergio Carneros  
 Temperature:23Deg  
 Manufacturer:Luz Negra S.L

Number: 43.024  
 Date:2023-10-04 09:14:37  
 Humidity:53%  
 Remarks:1 módulo led



			Graphic shift(%)	
Hue Bin	Hue Angle	Rf	Chroma	Hue
1	0.0° - 22.5°	66	-16	-4
2	22.5° - 45.0°	64	-13	9
3	45.0° - 67.5°	56	-6	23
4	67.5° - 90.0°	58	3	21
5	90.0° - 112.5°	68	14	13
6	112.5° - 135.0°	81	11	-1
7	135.0° - 157.5°	79	2	-11
8	157.5° - 180.0°	75	-6	-11
9	180.0° - 202.5°	75	-13	-4
10	202.5° - 225.0°	63	-18	13
11	225.0° - 247.5°	59	-7	27
12	247.5° - 270.0°	51	4	23
13	270.0° - 292.5°	78	10	9
14	292.5° - 315.0°	78	13	-4
15	315.0° - 337.5°	74	6	-15
16	337.5° - 360.0°	68	-5	-15

Model:Ecoled Mérida  
Tester:Sergio Carneros  
Temperature:23Deg  
Manufacturer:Luz Negra S.L

Number: 43.024  
Date:2023-10-04 09:14:37  
Humidity:53%  
Remarks:1 módulo led